

Elodea surveys on the Chugach National Forest

March 3, 2015
Cordova, AK





Elodea first documented in the State of AK in Eyak Lake July 21, 1982 by Dick Groff

(1985 Eyak Lake AMSA Cooperative Management Plan)

2011 Eyak Lake Surveys



Survey Summary

- Floating fragments visible across the lake
- Rooted infestations of *Elodea* common
- Floating fragments and/or rooted *Elodea* plants found near three float plane docks on Eyak (others not surveyed)

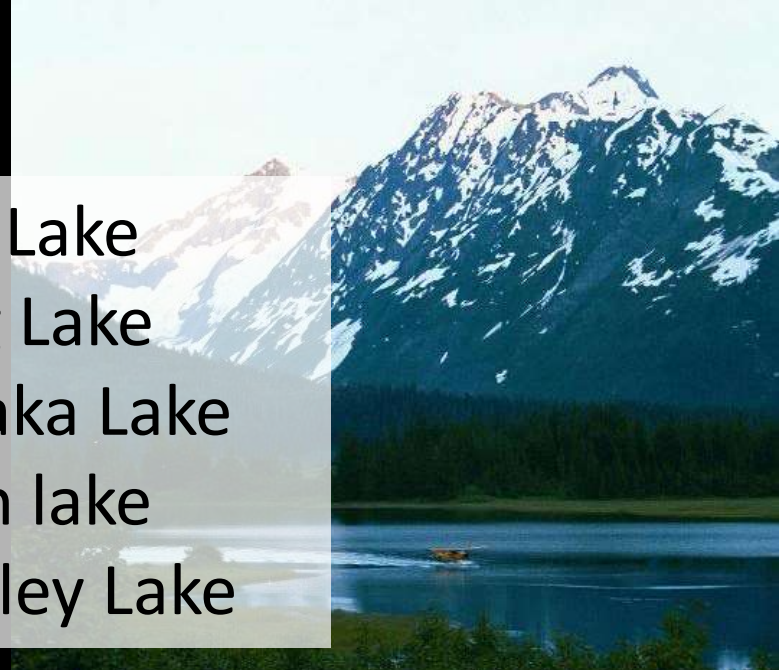




Eyak Lake



Tokun Lake
Bering Lake
Kushtaka Lake
Martin lake
McKinley Lake



Coghill Lake, Prince William Sound

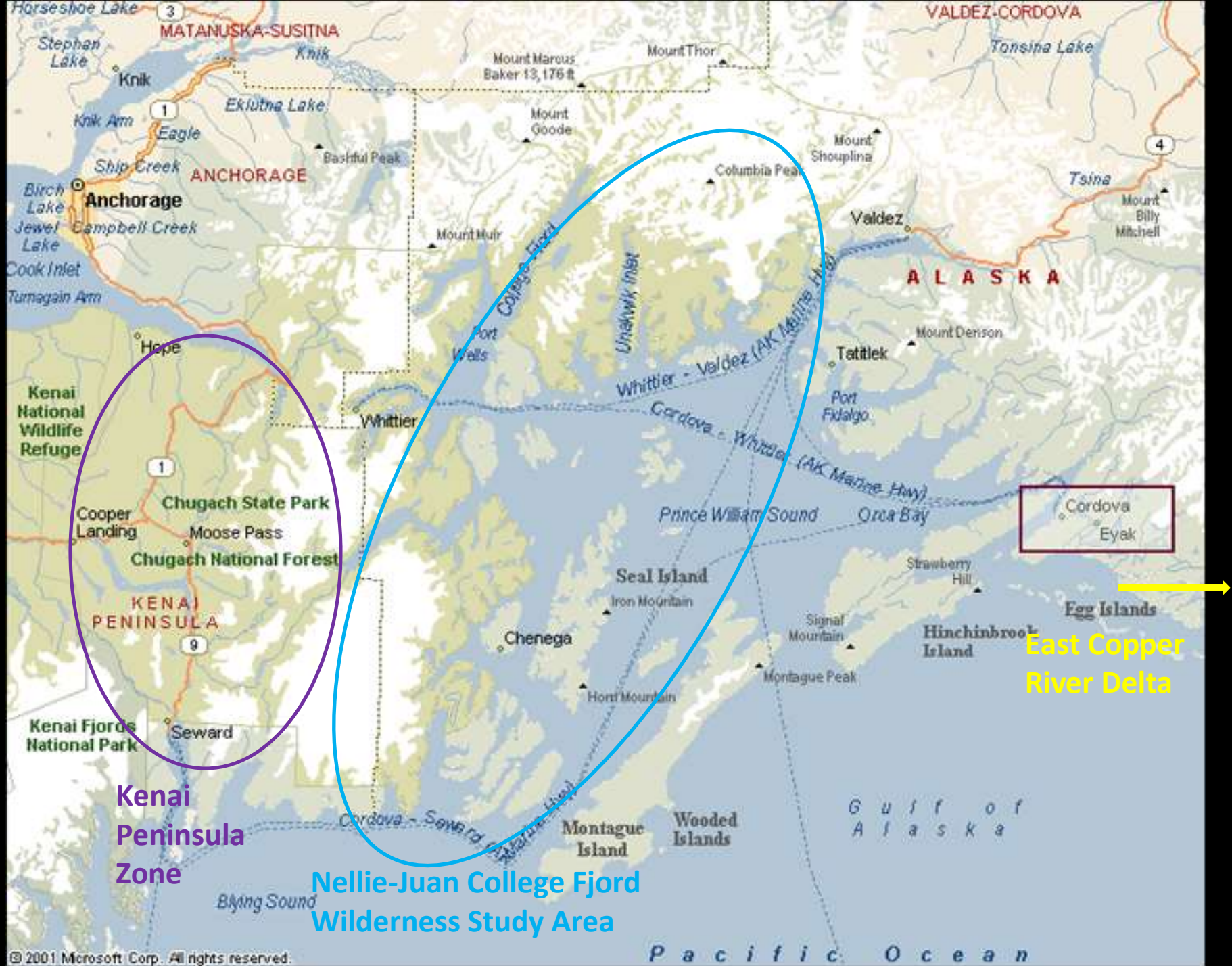
The next step....



Alaganik Slough

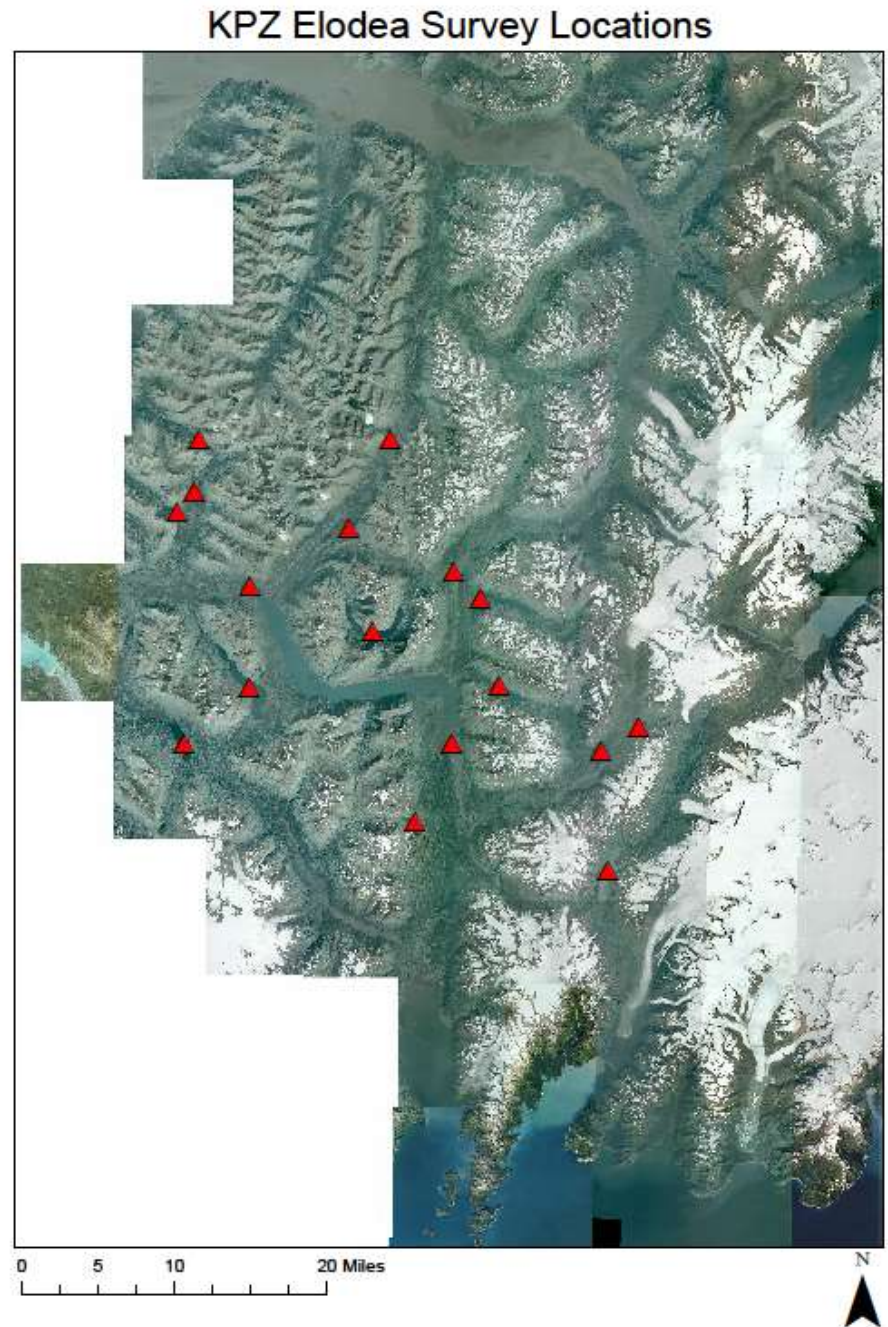


Eyak River



Kenai Peninsula (USFS) Survey Locations

- Grant Lake
- Jerome Lake
- Lost Lake
- Summit Lake
- Trail Lake
- Trout and Juneau Lakes
- Ptarmigan Lake
- Upper Russian
- Cooper
- Vagt
- Tern Lake

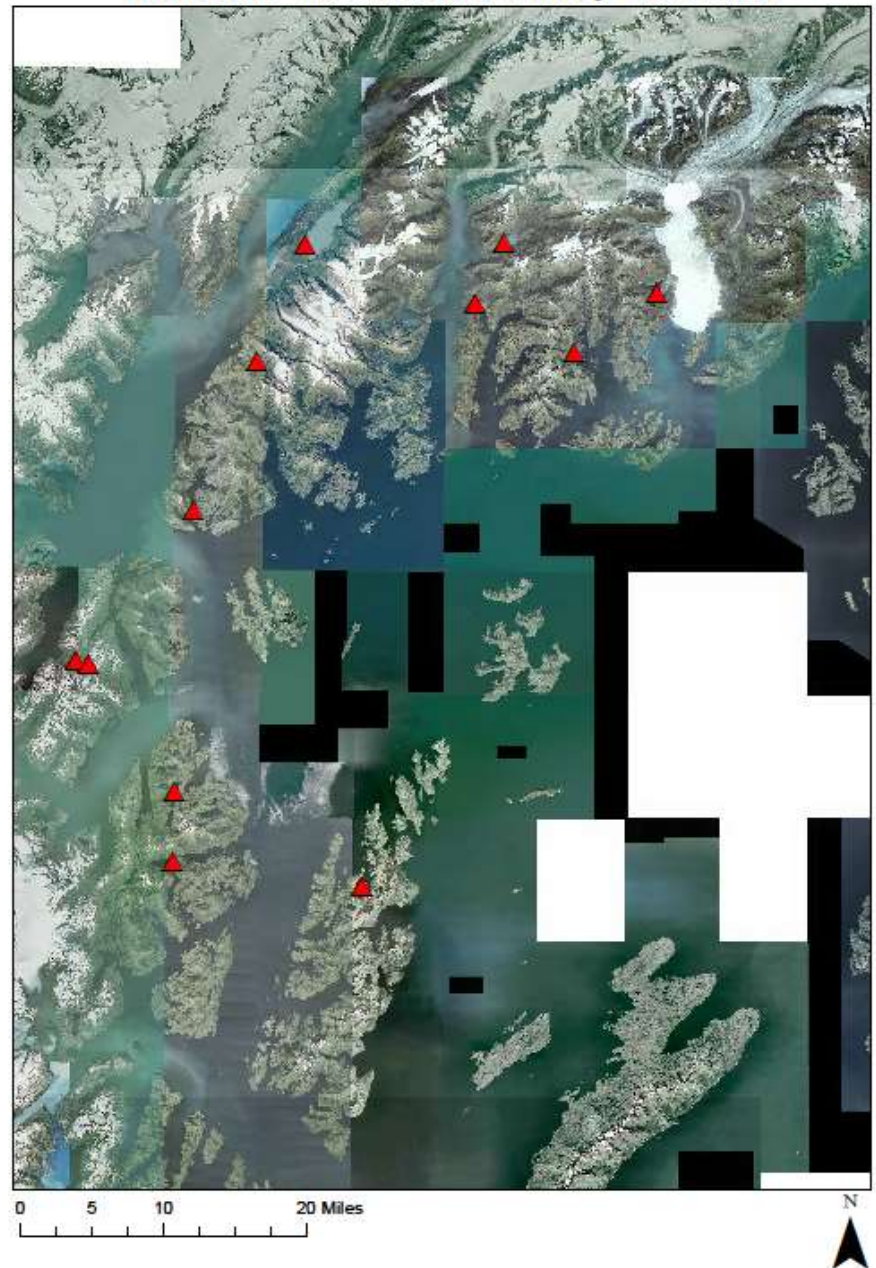


Western Prince William Sound Survey Locations

- Cannery Creek
- Coghill
- Davis Lake
- Eshamy
- Ester
- Main Bay
- Schroad
- Solf
- Cedar Bay



Western PWS Elodea Survey Locations



East of the Copper River Delta

- Little Martin
- Martin (known infestation by cabin)
- Bering Lake
- Kushtaka
- Pothole Lake
- Tokun



East Delta Elodea Surveys- Proposed locations



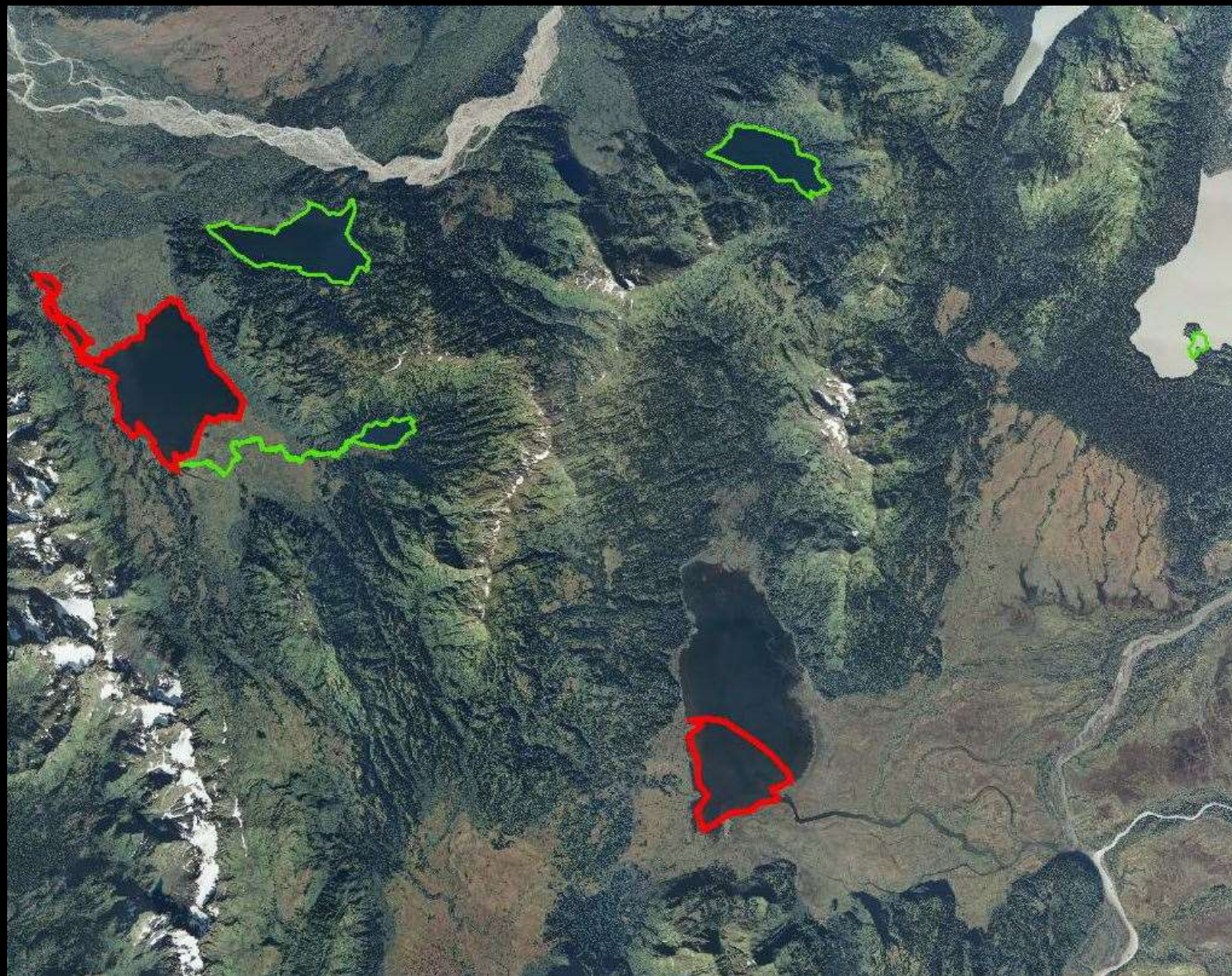


Results.....

East of the Copper River

Martin Lake
and Bering
Lake HEAVILY
infested

Little Martin,
Tokun, Pothole
Lake (and
Zasthatt Creek)
and Kushtaka
Lake are
Elodea Free





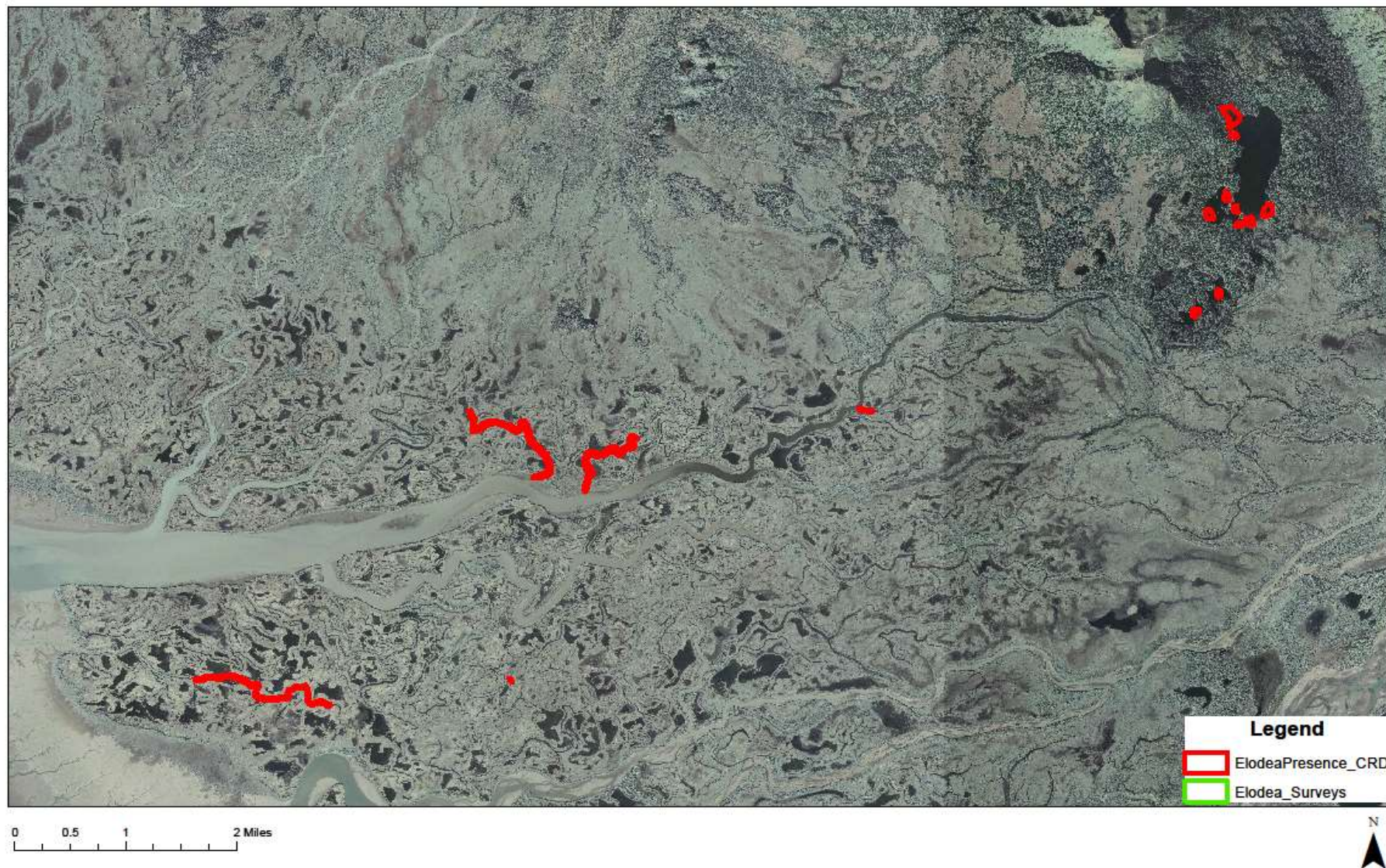
Dusky Nest Island Unit 20- off Eyak River



Lower Alaganik side sloughs



McKinley Lake and Alaganik Slough Elodea Occurrences



Chugach National Forest *Elodea* distribution

